



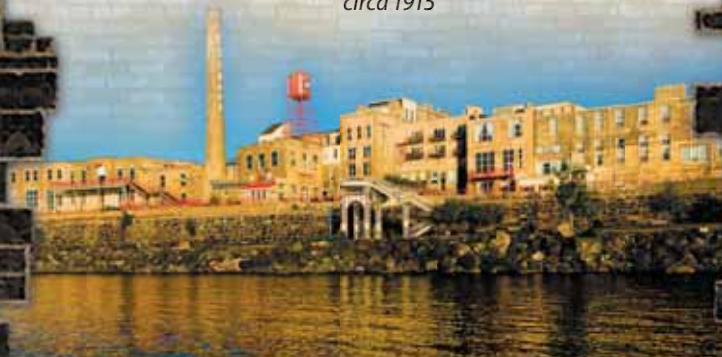
Fitger's

SHOP ★ EAT ★ SLEEP

Welcome to Fitger's Historic Walking Tour



August Fitger
circa 1915



Tour takes approximately 15 minutes

Fitger's is listed on the National Register of Historic Places.

★ The brewery's industrial smokestack and water tower now carry the Fitger's name and star logo as regional landmarks.

1859 Because of the prolonged depression of 1857, a brewery was proposed to put some unemployed Duluthians back to work. With the financial support of Sidney Luce, construction commenced. The brewery was built near a small stream flowing into Lake Superior at Seventh Avenue East. The creek was later named Brewery Creek. The enterprise was not particularly successful and was later taken over by Nicholas Decker.

1876 Michael Fink happened upon the scene and rented the Decker Brewery. Fink changed the name to M. Fink & Co. Lake Superior Brewery. Not long after, Fink found a young German brewmaster recently graduated from Germany's leading brewing school. Previously employed by the Pabst brewery on Milwaukee's south side, August Fitger became a partner in the brewery.

1883 Percy S. Anneke, a bookkeeper and salesman for the Schlitz Brewing Company, bought Fink's interest and the firm became A. Fitger and Company. The partners engaged in an ambitious plan to enlarge the facilities by adding storage, a wash house, a racking house, stables, offices and a bottling house.

1891 Fitger and Anneke installed the first ice refrigeration machine in a Minnesota brewery.

1904 The company incorporated under the name, The Fitger Brewing Company.

1910 The Fitger Brewing Company was one of the largest and most successful breweries in the state. The brewery reached a record production level of almost 100,000 barrels annually.

1919 The brewing of beer came to a halt due to the Volstead Act. Like every other brewery, Fitger Brewing Company had to stop producing beer as a result of prohibition. Fitger's produced near beers under the names "Pickwick," "Town Club" and "Dog's Head Lager." Other non-alcoholic Fitger's beverages of the era included "Isle Royale" and "Colonel's Choice" ginger ales.

Candy lovers enjoyed the Fitger's Flapper, the Fitger's Spark Plug, and the 5-cent Fitger's Nut-Goodie, the King Bee Nougat, and Fitger's Skookum - "A Bully Good Bar." Fitger's sold forty different kinds of candy bars under the Firestone and Greysolon labels.

1920 August Fitger traded his fifty percent of the brewery to Percy Anneke in exchange for land holdings in California. Anneke then gave his portion of the brewery to his son, Victor.

1924 Victor Anneke joined the Fitger Brewing Company as president.

1938 Arnold Fitger purchased the Fitger Brewing Company from the estate of Victor Anneke, who had died in 1937.

1938 John Beerhalter, Sr. was elected as the new president. Beerhalter, a native German and master brewer, was in charge of production and delivery for the company. Much of the present day buildings were constructed under his supervision.

1950 John Beerhalter, Jr. succeeded his father as president. Erwin C. Beerhalter, John's brother, served as vice president. The elder Beerhalter died in 1955.

1968 John Ferris took over as president.

1972 The Fitger Brewery closed its doors.

1984 The Fitger's Brewery Complex was reopened with a 48-room hotel, two full-service restaurants, and a retail center.

1994 The Fitger's Brewery Complex was purchased by local business people dedicated to its success.

1995 The Fitger's Station & Deck opened, connecting the Fitger's Complex to the beautiful lakewalk. It's a great place to enjoy refreshments and the breathtaking view of Lake Superior, watch foreign ships as they travel to far-off places, cheer on your favorite sailboat during the races on Wednesday nights (starting at 6 p.m.), and wave to the passing train as it travels beneath your feet.

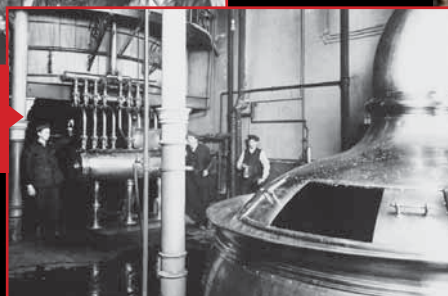
Hotel expansion from 48 to 62 rooms. Several of the rooms are suites with lakeviews, balconies, skylights and fireplaces.

★ It has been said that brewing is Duluth's oldest continuously operating industry.



Displayed
outside Fitger's
Brewhouse

With Prohibition
repealed in 1933,
the bottling house
crew was all smiles.



Displayed in
the Fitger's
Museum

Installed in 1901, this
hand-tooled, all-copper
brew kettle was an
integral part of the
brewing process.



Fitger's closed its doors
as a brewery on
September 30, 1972
and reopened in 1984
as the hotel and
shopping complex
you see today.

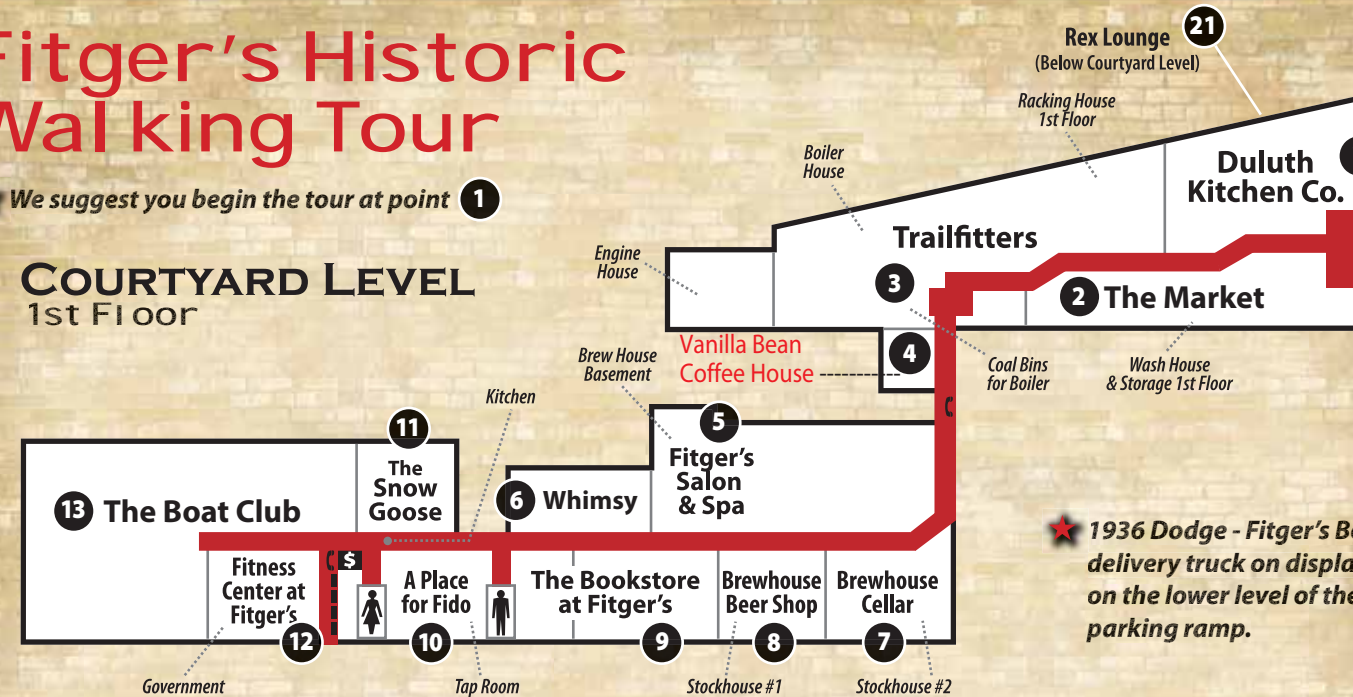


The first annual office picnic, 1921

Fitger's Historic Walking Tour

★ We suggest you begin the tour at point 1

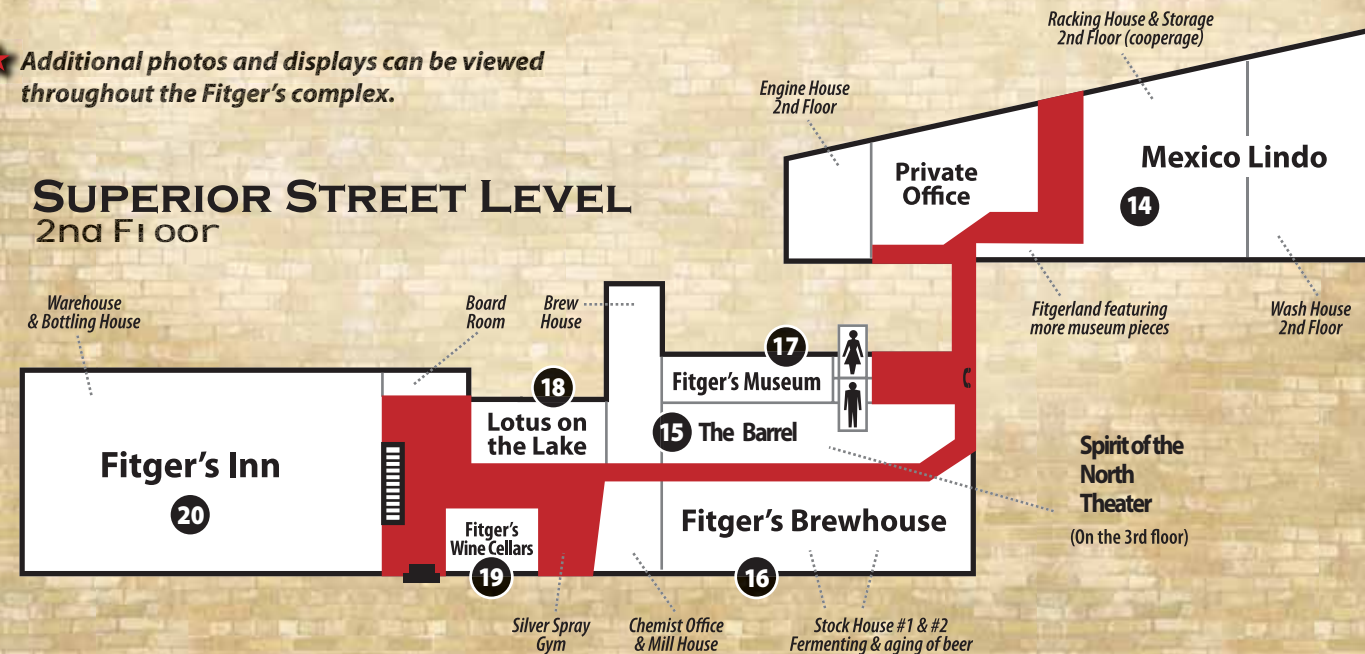
COURTYARD LEVEL 1st Floor



★ 1936 Dodge - Fitger's Beer delivery truck on display on the lower level of the parking ramp.

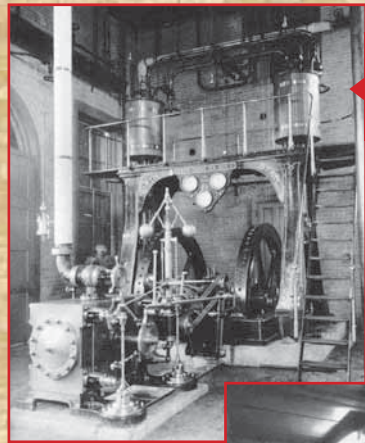
★ Additional photos and displays can be viewed throughout the Fitger's complex.

SUPERIOR STREET LEVEL 2nd Floor



Unique Shops and 3 Great Restaurants

- 1 Duluth Kitchen Co.
- 2 The Market
- 3 Trailfitters
- 4 Vanilla Bean Coffee House
- 5 Fitger's Salon & Spa
- 6 Whimsy
- 7 Brewhouse Cellar
- 8 Brewhouse Beer Shop
- 9 The Bookstore at Fitger's
- 10 Place for Fido
- 11 The Snow Goose
- 12 Fitness Center at Fitger's
- 13 The Boat Club
- 14 Mexico Lindo
- 15 The Barrel
- 16 The Brewhouse
- 17 Fitger's Museum
- 18 Lotus on the Lake
- 19 Fitger's Wine Cellar
- 20 Fitger's Inn
- 21 The Rex



Displayed outside Fitger's Inn

Ever innovative, Fitger's Brewing Co. installed the first ice machine in the state of Minnesota in 1891.

Displayed in A Place for Fido

The scene of many happy times, Fitger's original Tap Room was rented to private parties.



Martin Jorstad, Fitger's truck driver. Photo courtesy of Mrs. George Frost of Cromwell, Minn.



Fitger's Inn Lobby

Fitger's ornate cashier cage is still in use today.

